

AEG

GLASS-GLASS SOLAR MODULE AS-M602G



285-290 Wp 60 MONOCRYSTALLINE CELLS

AEG solar modules combine the most advanced technology with high reliability in manufacture to offer you a product meant for high achievements.



1500 V MAXIMUM SYSTEM VOLTAGE FOR IMPROVED BOS

The AEG solar module AS-M602G is suitable for a maximum system voltage of 1500 V, thus improving the general BOS of your installation.



DEVELOPED FOR HARSHEST ENVIRONMENTS

AEG glass-glass solar modules are made for challenges and are designed to withstand extreme weather conditions.

COMPREHENSIVELY CERTIFIED

AEG solar modules and production facilities are compliant with the the latest standards to guarantee safety and reliability. Production facilities are certified according to ISO 9001, ISO 14001 and OHSAS 18001. AEG solar products are certified among others by:



YOUR ADVANTAGE AT A GLANCE

Premium solar panel with quality components
High efficiency - up to 290 Wp
Product certified IEC 61215, IEC 61730
15 years Product warranty
30 years 2-step Power warranty

More on: www.aeg-industrialsolar.de



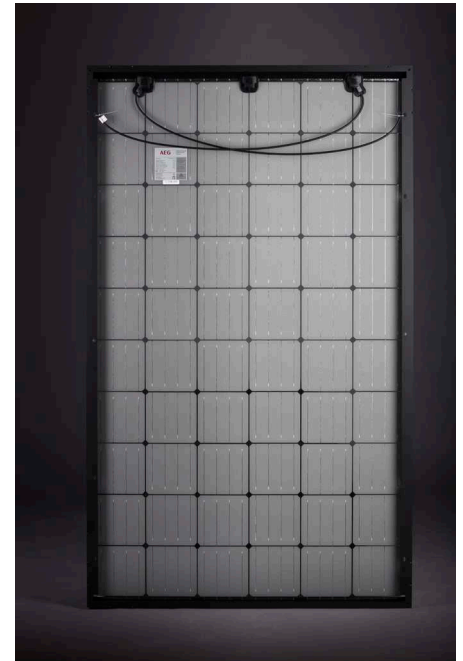
PHOTOVOLTAIC MODULE AS-M602G

ELECTRICAL CHARACTERISTICS AT STC¹

Nominal Power (P _{max}) ²	[Wp]	285	290
Tolerance on Nominal Power P _{max} ³	[Wp]	-0 / +5	-0 / +5
Maximum Power Voltage (V _{mp})	[V]	31.98	32.19
Maximum Power Current (I _{mp})	[A]	8.91	9.01
Open Circuit Voltage (V _{oc})	[V]	39.32	39.48
Short Circuit Current (I _{sc})	[A]	9.39	9.49
Module Efficiency (η _m)		17.2%	17.5%
Maximum System Voltage	[V]	1500	1500
Series Fuse Maximum Rating	[A]	15	15

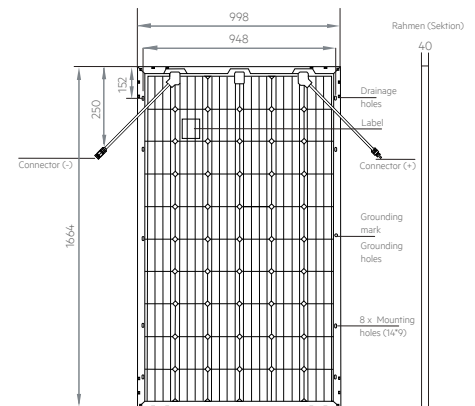
TEMPERATURE CHARACTERISTICS

NOCT	45°C ± 2°C
P _{max} Temp. Coefficient (γ)	-0.39 %/°C
V _{oc} Temp. Coefficient (β)	-0.30 %/°C
I _{sc} Temp. Coefficient (α)	0.06%/°C
Operating temperature	-40°C to + 85°C



MECHANICAL CHARACTERISTICS

Solar cells	60 (6 x 10) monocrystalline silicon, 156.75 x 156.75 mm (6.17") cells
Front glass	2.5 mm (0.09") high-transparency glass
Back glass	2.5 mm (0.09") high-transparency glass
Encapsulant	EVA (Ethylene-Vinyl Acetate), transparent
Frame	Anodized aluminum alloy, black
Junction box	Split, IP67 rated, 3 bypass diodes
Cables	UV resistant cable 1000 mm (39.3"), sec.4.0 mm ²
Connectors	MC4 compatible connectors
Dimensions	1664 mm x 998 mm x 40 mm (65.5" x 39.3" x 1.57")
Weight	25.8 kg (56.87 lbs)
Maximum load	Wind: 2400 Pa / Snow: 5400 Pa



Module dimensions in the technical picture are expressed in mm with tolerance ±2 mm (+0.079")

1 - Standard Test Conditions (STC): Irradiance 1000 W/m², Air Mass AM = 1.5, Cell Temperature 25°C; Power measurement uncertainty within ± 3%.

2 - PERC Technology deployed from 285 Wp upwards.

3 - AEG photovoltaic modules are classified according to a principle of positive power tolerance: the Power Output measured at STC of the delivered modules exceeds their assigned Nameplate Nominal Power at STC within a power tolerance range between -0 Wp and +5 Wp.

4 - Limited power warranty covering the first 15 years at 90% outputs and complexive 30 years at 80% output

© Solar Solutions GmbH. Specifications in this datasheet are subject to change without notice. Code: AS-M602G-P-M6N1-4BB 285-290 version 2017072.EN
AEG is a registered trademark used under license from AB Electrolux (pub)

PACKING CONFIGURATION

Packing configuration	26 pcs / pallet
Loading Capacity	728 pcs / 40 ft HC

WARRANTIES

Product warranty	15 years
Performance warranty	30 years, 2-step ⁴

CONTACT US

Solar Solutions GmbH | Schneckenhofstrasse 19 | 60596 Frankfurt am Main | Germany
Tel: +49 69 400 500 810 | Fax: +49 69 400 500 819 | Mail: info@aeg-industrialsolar.de
www.aeg-industrialsolar.de